

# ESP PERFORMANCE

## Performance



We are pleased to confirm that the ESP drywall range of systems and profiles are manufactured in accordance to BS EN 14195:2005 being the European standard for the production of metal framing components for gypsum plasterboard systems. These are supplied CE with CE marking.

The scope of this standard specifies the characteristics of the metal framing sections used in conjunction with plasterboards (conforming to EN520) used to build non-load bearing partitions, wall and ceiling linings.

We confirm that in accordance with the European standards, all products are manufactured using galvanized steel coils DX51D as BSE EN 10326 and 10327. The reaction to fire is classified on Euroclass A1 being "No contribution to fire."

Declaration of Performance (DoP) specification data sheets and safety data are available for all products all in accordance with BS EN 14195.

The primary factor in determining fire and acoustic performance in partition walls and ceilings is the correct specification to the board used for the lining construction along with other factors such as perimeter sealing, type of cavity insulation and board fixing method all of which have a major effect on the overall performance of the total system.

Our products offer equal performance to products from other primary producers manufactured to the same high standard and quality. We are pleased to advise on project requirements but no warranty is hereby expressed or implied and we do not accept liability where products are installed prior to an agreed specification being agreed and supplied in writing.



GALVANISED STEEL

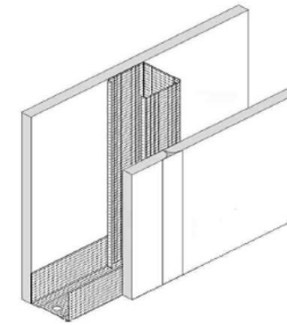


HEALTH & SAFETY PDF

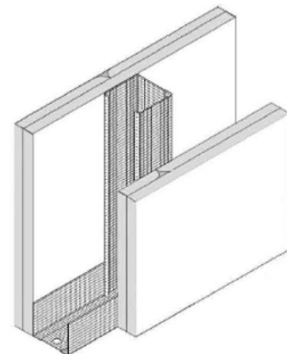


ASSOCIATE MEMBER

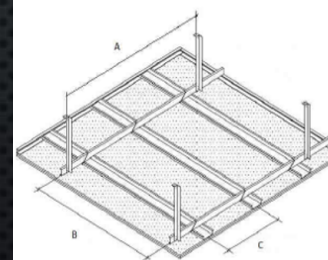
FIS



**ESP Single stud with a single layer 15mm Type F Fire board both sides. Non Loadbearing partition system suitable for residential, commercial, retail, hotel, education and leisure buildings**



**ESP Single stud with a double layer Type F Fire board both sides. Non Loadbearing partition system suitable for residential, commercial, retail, hotel, education and leisure buildings**



**A concealed suspended ceiling grid system suitable for most internal dry-lining ceiling applications. Suitable for domestic, commercial & industrial buildings. The system comprises of a concealed metal framework which is suspended from the structural soffit using galvanized angle section & angle cleats. Fire rated with Type F Fire board. Details on request.**